

the
messenger

nmc NORTHWEST NAZARENE COLLEGE

General edition

October, 1980



Gary Woodroof, a member of the Northwesterners, sings a verse of "I left my heart in Papua New Guinea" to a young friend while on tour this summer.

WAYNE LARSON

**"The Road to Melbourne"
and other hit tours . . .**

Page 3

New complex opens to full house

A waiting list has already been started for students who weren't fortunate enough to be included with the 136 single students now living in the newly opened on-campus student-housing complex.

The beautiful new structure, which opened Saturday, September 20, features 34 two-bedroom, four-student units on two levels. The women's wing of 19 units, and the men's wing of 15 units, each have a private courtyard and sundeck. The wings are joined in the center with a warmly furnished common lounge-hospitality area with the two resident directors' apartments located just off the lounge. Each wing has a separate TV-recreation area and laundry facility above the lounge on the second floor.

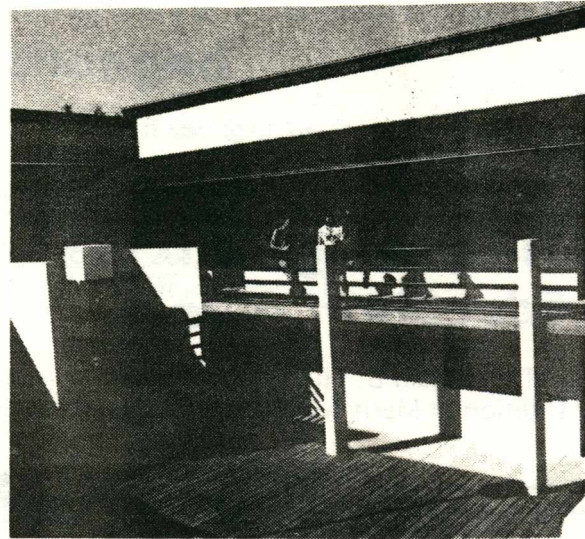
Designed with security in mind, there is only one entrance to the complex, directing traffic past the front reception desk. Each

unit in the motel-like configuration opens onto one of the two courtyards.

Inside, the students live in a style a distinct step up from dormitory living. Each unit has a living-room and "convenience" kitchen area in the front, and two bedrooms with two beds and desks each in the back. Separating the two living areas is a hallway pod with closets, two vanity sinks, and an enclosed shower and toilet.

Living in the complex are primarily juniors and seniors. All of the women's dormitories (Morrison, Dooley, and Culver) are full this fall, with some space available yet in the men's dormitories (Chapman, Mangum, and Sutherland). The on-campus Olsen apartments are being used this year entirely for upper division single students. Even with the addition of the new building, the on-campus capacity of 992 students is nearly 97% full.

Dedication of the new residence has been set for November 26 during the Fall Regents meetings.



The newly opened on-campus housing complex has helped ease the crowded conditions in the dormitories.

NORTHWEST
NAZARENE
COLLEGE

the messenger

October, 1980

1,320 enroll

Fall roster filled with new names

"The team is well-coached, enthusiastic and eager for the challenge ahead. The spacious arena is spic and span, its thousands of seats empty and quiet for the moment. The warm autumn sun filters through the brightly-hued leaves, mingling with the fragrant fall air.

"Suddenly, on cue, lines of cars appear from all directions, pouring off the freeway and onto the campus. In the fast-filling parking lots, license plates from dozens of surrounding states are seen everywhere.

"At the arena, the buzzing crowd finds itself in long snake-like lines which move slowly toward the seating areas, each section marked with an identifying sign.

"The team has taken its place, and before everyone has found their way into the arena, the action begins!"

The fall tradition just described is **not** a big Saturday afternoon football game at Notre Dame, but the annual event called "Registration at NNC". The administrative and faculty "team" has never lost in NNC's sixty-seven year history!

This year's official score at the conclusion of fall registration shows a total enrollment of 1,320 students, including 484 new and continuing freshmen. This figure represents the second highest enrollment ever at NNC, only 12 below last year's mark of 1,332. The Full-Time Equivalent (FTE) count of 1,289, on which budgets are based, is only 2 below last fall's level.

School officials are very pleased and optimistic about the enrollment. The slight decline has been partially attributed to current economic conditions, including a very poor summer employment situation in the Northwest, and the phasing-out of the nursing program here at NNC.



Long lines at registration teach patience and long-suffering.

CRAIG RICKETT, OASIS

Student Affairs Staff helps students "belong"

Under the direction of the new Dean of Students, Mr. Jerry Hull, the Office of Student Affairs and its staff has been given a new look to go with the new faces in the office. The work of the office has been delegated on the basis of tasks rather than by sexes as in the past (Dean of Men, Dean of Women, etc.)

A key to the work of the Student Affairs Office, according to Hull, is to give each student a real sense of "belonging". Such a feeling will contribute to the persistence and success of each student, which is good for the institution as well.

As Dean of Students, Hull sees his role as a facilitator and coordinator of staff activities, a liaison to ASNNC and the school publications, and a representative to the various administrative and student councils and committees.

Working on his staff this year, after a long absence from NNC, is Mr. Elmore Vail, Associate Dean of Students for Residential Life. His responsibilities cover everything related to single student residential facilities, from programs and personnel to maintenance and counseling.

Barbara Lindley, wife of faculty member Dr. Ray Lindley, is now serving as Assistant

Dean of Students for Student Services. Under her direction are the areas of chapel attendance, health center, married student activities and housing, and special events.

Continuing in the office with slightly different responsibilities as Assistant to the Dean of Students for Student Activities is Wes Maggard. Wes directs campus security, registration activities, summer mailings, and serves as a liaison for student organizations, the Student Center staff, and the BRICK House recreation building.

Paul Stallcop continues to serve as Director of Financial Aids. He has moved his office to the former Student Affairs office in the Administration Building, while Student Affairs has moved to a remodeled second floor of the Student Center (former KCRH suite).

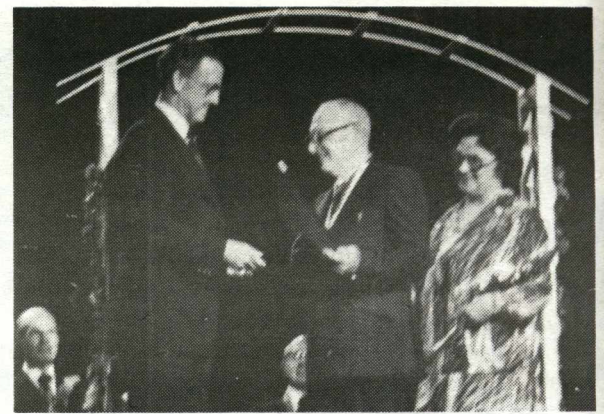
Dean Hull feels that the admonishment, counsel and encouragement of his staff and colleagues, added to the strength and wisdom only God can give, will be necessary for him to see the realization of his dream for a genuine revival on the NNC campus, and all of the NNC students becoming "responsible Christians in community".

Tillotson given Education Award

Dr. Donald B. Tillotson was presented the Citation of Merit Award by President Pearsall

at the 1980 General Assembly in Kansas City this past June. The award was given during the Department of Education service, during which one faculty member from each of the Nazarene colleges, selected by vote of their colleagues, was presented. A mass choir and orchestra, composed of Nazarene college students, including NNC's "Hallelujah Brass", presented special music.

Tillotson was chosen for his 36 years of service to NNC as Professor of Mathematics and numerous other faculty and administrative positions. He is now semi-retired and teaching part-time in the NNC math department.

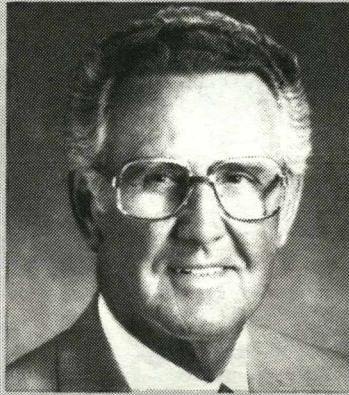


Dr. Pearsall presents Dr. Tillotson the Citation of Merit award.

from the President's pen...

No Bounds on Optimism

Dr. Kenneth Pearsall



The first Secretary of the Department of Education for our country, the Honorable Shirley M. Hufstедler, in her address to the National Congress on Church-Related Colleges and Universities, said, "All of us who value church-related colleges should enter the new decade with flags flying and with heads high. As the heirs to a magnificent tradition, there can be no reasonable bounds on our optimism, our confidence, and on our future."

These words from a person in authority in our country, at a time when the prophets of doom are making some sad predictions about the church-related colleges, came to the educators and administrators as a breath of fresh air. The Secretary went on to say, "Your colleges are valuable not simply because they have stood so long against the pressures of time, but because the ideas they have stood for and stand for today are worth preserving."

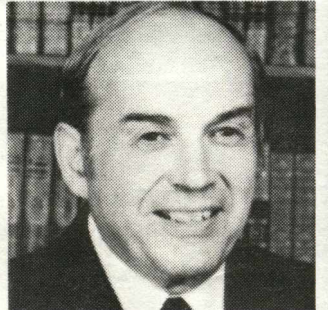
During the sixty-eight years of service to the youth of the Northwest, NNC has had to deal with various kinds of pressures. In spite of the trying circumstances, she has been true to her founding fathers and has weathered the storm. We are proud of our "magnificent tradition" of offering a liberal arts education in a Christian atmosphere. Our goal will continue to be to offer quality education to the students who enroll on our campus. Our motto, which was adopted many decades ago,

"Seek ye first the Kingdom of God," will continue to be our guiding force as we set our sails for the future.

We shall take the advice of the Secretary and hold our head high, and we shall fly the flags as we begin a new decade. However, we are realistic enough to know that it is going to take the full cooperation and support of our many constituents for NNC to stand against the pressures of the '80's. We shall continue to make the best of our own resources, and by careful budgeting and conservative spending hope for a continued balanced budget. We shall carefully define our strengths, weaknesses and possibilities. We shall bend every effort to remain true to our tradition and heritage. We shall recognize that recruitment will become our number one problem in the future. Every effort will be made to make the youth of the Northwest aware of the adventure in Christian living that will be theirs if they enroll at NNC.

With faith and optimism and great confidence in our constituency, we enter into the decade of the '80's.

Ohio businessman inspires President's Dinner guests, students



Dr. R. Stanley Tam

With only \$37 in his pocket, Stanley Tam started out in 1936 to build a silver reclaiming operation. Four other businesses had gone bankrupt attempting the same process. Tam became the fifth. Not easily discouraged, he started over, slowly building his modest business (States Smelting and Refining Corporation). At the point where he was grossing a meager \$12,000 a year in sales, and he and his wife were living on \$14 a week, he turned his business over to God in a legal transaction. The resulting multi-million dollar corporate success story has become a book and a motion picture, both entitled, "God Owns My Business."

Tam's story of faith and dependence on God was shared October 9 at the annual President's Dinner to 350 friends of the college: donors, Nampa Chamber of Commerce and local service club members. The banquet is given each year to show NNC's appreciation for those who have supported NNC so faithfully over the last year. Dr. Irving Laird organized the banquet, and Dr. Joseph Mayfield served as emcee. Both men are serving NNC part-time in Community Relations this year.

Mr. Tam also shared his story and a challenge to faithful living and giving in the October 10 chapel before an attentive audience of faculty and students.

Faculty adds to depth, experience

Each fall the NNC faculty takes on a slightly different look as new professors and support personnel are added to the NNC family. One of the largest groups of new personnel in recent years has joined the staff this year.

Included are twelve new full-time faculty members, two part-time professors, two new student affairs personnel, and two teaching fellows.

Faculty: DR. JACK ALBAN - Associate in Guidance and Counseling, Director of Testing, Psychology; MR. MICHAEL BANKSTON - Music; DR. WESLEY HANSON - Biology; MISS DARLENE KEITH - Speech-Communication; MISS CLAUDENE LITTLE - Home

Economics; MR. CRAYTON MOSS - Health, P. E. & Recreation; DR. DAVID REDFIELD - Chemistry; MRS. BETH SHAFER - Business; MR. DONALD SCHULTZE - Social Work; DR. RICHARD STELLWAY - Sociology; MR. KENNETH YODER - Mathematics.

Part-Time Faculty: MRS. JEAN PALMER-DALEY - Education; MR. JAMES TURSA - Mathematics.

Student Affairs Personnel: MRS. BARBARA LINDLEY - Assistant Dean of Students for Student Services; MR. ELMORE VAIL - Associate Dean of Students for Residential Life.

Title III Personnel: MR. MYRON MURRAY - Director of Management Information System.



New faculty members, left to right: Mr. Michael Bankston, Dr. David Redfield, Mr. Crayton Moss, Mr. Elmore Vail, Miss Claudene Little, Miss Darlene Keith, Dr. Wes Hanson, Dr. Jack Alban, Mr. Kenneth Yoder, Mr. Myron Murray, Dr. Richard Stellway, Mr. Donald Schultze.

1980-81 MEN'S VARSITY BASKETBALL SCHEDULE

Nov. 21	Point Loma	San Diego, CA
22	Point Loma	San Diego, CA
28	LEWIS & CLARK	HOME
29	LEWIS-CLARK ST.	HOME
Dec. 2	MONTANA TECH	HOME
5	Tip-Off Tourney	Klamath Falls, OR
6	Tip-Off Tourney	Klamath Falls, OR
8	GREAT FALLS	HOME
13	W. Montana	Dillon, MT
15	N. Montana	Havre, MT
20	Univ. Of Idaho	Moscow, ID
Jan. 2	WESTERN BAPTIST	HOME
3	CARROLL COLLEGE	HOME
9	S. OREGON ST.	HOME
10	WARNER PACIFIC	HOME
13	E. OREGON ST.	HOME
16	Oregon Tech	Klamath Falls, OR
17	S. Oregon St.	Ashland, OR
24	College of Idaho	Caldwell, ID
26	Lewis-Clark St.	Lewiston, ID
31	OREGON TECH	HOME
Feb. 5	Western Baptist	Salem, OR
7	George Fox	Newberg, OR
13	GEORGE FOX	HOME
14	E. Oregon St.	La Grande, OR
17	COLLEGE OF IDAHO	HOME
20	Warner Pacific	Portland, OR
21	Seattle Pacific	Seattle, WA

1980 grad joins Admissions Staff

Susan Sieloff Bunker, a June, 1980, graduate of NNC, has begun serving as an Admissions Counselor on a temporary basis, replacing Mr. Dan Sweatt, who resigned effective October 1 to become Minister of Youth at the Seattle Aurora Church of the Nazarene. He had served as Admissions Counselor for

16 months.

Mrs. Bunker will spend most of her time in the field visiting youth groups and Christian high schools interviewing prospective NNC students. Last year as a student at NNC, she served as ASNNC Social Vice President and was elected Homecoming Queen (See January, 1980 *Messenger*). She was married in September to Mr. Kyle Bunker, current ASNNC Social Vice President, from Portland, Oregon.

Regents meeting date changed

The fall meeting of the Board of Regents has been moved from its traditional September date to November beginning this year. The Regents will gather in Nampa on November 25 and 26, just prior to Thanksgiving and the annual Homecoming festivities.

three

the nnc messenger

Summer groups tour Northwest, overseas



The Northwesterners sang before many appreciative audiences on their summer tour, including this one in Mt. Hagen, Papua New Guinea.

WAYNE LARSON

What do Sydney (Australia), Port Moresby (Papua New Guinea), and Ephrata (Washington) have in common? They were among more than 160 towns and cities to be visited by a music group from NNC during the summer of 1980.

The NORTHWESTERNERS, directed by Dr. Double E Hill, made a five-week tour of

Australia and Papua New Guinea during July and August. The sixteen-member group sang in churches, schools, universities, hospitals, retirement homes, shopping malls, city squares, native villages, and on radio and television.

The Australian itinerary, arranged by the Nazarene district superintendents and the Bible College principal, included perfor-

mances in Sydney, Adelaide, Melbourne, Brisbane, and points north. The mission directors in Papua New Guinea arranged a tour that included stops in Port Moresby, Lae, Ukarumpa, Kudjip, and Mt. Hagen.

According to Hill, the benefits from these tours are two-fold: the Northwesterners, in sharing their music and faith, promote and publicize the Church of the Nazarene where it is not widely known, while ministering to church members by providing encouragement, fellowship and a sense of belonging to the international church. Secondly, the NNC students who make up the group observe first-hand the work of the church in other areas of the world and return home with a new appreciation for the church and a broader vision for missions.

Three other music groups—GENTLE SPIRIT, BROTHERHOOD, and LIVING HOPE—traveled nearly 26,000 miles in the seven Northwestern states of Washington, Oregon, Idaho, Utah, Montana, Wyoming, and Colorado. They visited 156 churches and 12 youth camps representing the Lord, the Church, and the College to old and young alike. Hundreds of new prospective students were contacted by the groups, with many personal friendships established as they stayed in homes, met with youth groups, sang in services, and participated in the activities of the district youth camps.

Golf tourney raises \$500

Sixty golfers competed in the First Annual "Friends of NNC" golf tournament held October 7 at Purple Sage Golf Course in Caldwell. Formerly known as the Regent's Golf Tournament, the event is now sponsored by the Crusader Athletic Association. Approximately \$500 was raised this year to be used for athletic scholarships at NNC.

Reese Verner, NNC alum from Nampa, captured the low gross award. He tied with John Cramer at 77, but won the title on the first hole of a playoff. Local sportscaster, Larry Mansely, won the net side with a 63. Claudia Cramer won the women's net and gross divisions with a 76 net and 101 gross.

Myron Finkbeiner, NNC alumni executive secretary, was encouraged by the good turnout and says that plans are already underway for a bigger and better event next year.

Fall Sports report

Field Hockey women defeat BYU, Idaho

The women's field hockey team remains unbeaten through the middle of October with wins over Willamette, Brigham Young University, Boise State University, and the University of Idaho. The fast, aggressive team is developing as one of the best teams in the Northwest. Leading scorer for the team is Maureen Freitag of Melba, Idaho. NNC will

host the NCWSA Regional Tournament November 14-15, and should have a good chance to qualify for the national tournament on their home field. They are coached by Jean Horwood.



DOUG WARREN, CRUSADER

Junior Essa Gaye leads the soccer team in scoring.

Soccer team tied for first

A one-goal loss to Warner Pacific prevented NNC from taking over sole possession of first place in the district on October 10. The season has been highlighted by a 11-0 win over Pacific University and a 2-1 win over de-

fending district champion Oregon College of Education in Monmouth. The Crusaders, led by Essa Gaye of Gambia, West Africa; Sulayman A Njie from Gambia; and Bryan Wheeler from Centralia, Washington, have fought their way to a strong 4-1 mark in league play. Coach Art Horwood is optimistic about his team's chance to make the district playoffs in NNC's third year of varsity competition.

New Coach leads volleyballers

Kathy Haughey, a new teaching fellow in the P. E. department, is coaching the NNC volleyball team this year. Highlight of the young season has been a runner-up finish in the ten team NNC-College of Idaho tournament held in Nampa and Caldwell. The team has a 1-1 league mark at this writing. Sue Collar, Alamo, California, and Betty Seward, Winnemucca, Nevada, have been outstanding for the Crusaders.

Young runners finish fourth in Oregon

Led by freshmen Dave Smith, Lewiston, Idaho and Dan Graber, Wilder, Idaho, the cross-country team finished fourth in the Eastern Oregon Invitational in October. Alumnus Dave Mangum, Nampa school teacher, is filling in for Coach Paul Taylor, who is on sabbatical this fall. The runners will compete at the district meet in Portland on November 8.

AlumNews

30's

HARRIET (SHARP) DEMARAY '25 sends greetings from Kankakee, Illinois. She and her husband are both retired and live near the Olivet campus. They're enjoying retirement and the activities of the college.

R. T. BOLERJACK '51 has joined the faculty at Nazarene Bible College where he has been named Academic Dean.

BOB BURKHART '55 and wife Carol (Hankins) send greetings from Seattle. Bob directs a Refugee program covering the three Northwest states and Alaska.

TOM LOWRY '55 has a private counseling clinic in Bismarck, ND. Tom has been extensively involved with Marital Enrichment and Family Relationship workshops.

RICH POWERS '55 recently changed pastorates from Cambrian Park, San Jose to Napa, CA. Rich is proud to say three of his children have graduated from NNC and his youngest is a student at Point Loma College.

60's

DON '64 and **MYRLE CANONGE '64** send their

greetings from Berrimah, Australia. They are a part of the Wycliffe Translators working to translate the Bible to the Murinlata language.

GAIL (RILEY) ZAVOS '64 received her Doctor of Juris Degree from Loyola Law School on June 1, 1980. Gail presently is clerk to the Justice of Court Appeals for California.

70's

KENT HILL '71 successfully defended his dissertation, "On the Threshold of Faith: An Intellectual Biography of Lev Shestov from 1901 to 1920" on September 15, 1980. Kent will officially receive his degree from the University of Washington in December.

the nnc messenger

four

Cliff Cowley named Alumnus of the Year



Cliff Cowley '52

Cliff and his wife Carol (Sharp) have three daughters: Karen, 20, a junior at NNC; Lynne, 18, a freshman at NNC; and Brenda, 12, at home. Never too busy in his office or church to find time for his family, the strong Christian lives of his children testify to Cliff's understanding of fatherhood.

So we congratulate this year's "Alumnus of the Year." It will be a delight for NNC and the Alumni Association to honor Cliff at this year's Homecoming celebration. The recipient will be the guest speaker at the Homecoming chapel and will receive the award at the banquet on Friday afternoon.

N.N.C. HOMECOMING



Wednesday - Nov. 26th

10:00 AM - Dedication of L.T. Corlett Resident Hall
College Church
Corlett Hall will have Open House for remainder of weekend.

DRAMA: "Lute Song"

9:00 PM - SCIENCE LECTURE HALL
\$1.25



Thursday - Nov. 27th

9:00 - Registration Desk Open
Lobby Administration Building

1:00-5:00 - Country Store Boutique
Wiley Learning Center

1:00 "Lute Song" Science Lecture Hall
\$1.25



THANKSGIVING FAMILY DINNER

SAGA 4:00 PM - \$4.75 Reservation Only
6:00 - Open House at all residence halls.



ALL COLLEGE MUSIC SPECTACULAR

8:00 FIRST CHURCH
Free Admission

10:00 - Homecoming Bonfire -
Vacant lot next to Elijah drain

Friday - November 28th

9:00 - Registration Desk Open - Lobby

8:15 AM-9:30 AM
REUNION BREAKFAST
AND PHOTOGRAPHS
Classes of '55, '70, '75

9:00-5:00
Country Store
Wiley Learning Center



11:15-12:00 High School Seniors and Parents
Director of Admissions - Feltar Hall, Wiley

12:30 Homecoming Parade

2:45 ALUMNI BANQUET
"Alumnus of the Year" Presentation
SAGA \$4.75 - Reservations Only

4:00 - NNC J.V.'s vs Alumni

6:00 - Varsity Wrestling

7:45 Coronation of Homecoming Queen

8:30 - Basketball NNC vs Lewis & Clark
(Portland)

Post Game Reception for
Homecoming Court - SAGA

10:00 - Class Reunion Parties, '55, '70, '75

Cliff Cowley '52, is "Mr. NNC Alumnus" personified. In every sense, the recipient of this year's award exemplifies what NNC looks for in her graduates.

Cliff has been employed by the Pacific Power and Light Company for the past 28 years. Presently he is Director of Corporate Auditing, with responsibilities covering the company's six state electric operations. Don Frisbee, Chairman of the Board, writes, "Cliff is one of our top supervisors, reporting to our Senior Vice-President. He has achieved a high level of professional stature within the company. He is a man of high Christian ideals who carries out his corporate and community responsibilities in the true spirit of the Christian philosophy."

Mr. Cowley's devotion to his church is unparalleled. His involvements with Portland First Church would take considerable time and space. Among his most important efforts are teaching a Sunday School class, participating in the choir, and serving as chairman of the Board of Trustees. He also chairs five different sub-committees. Most of his time recently has been spent leading and unifying his church in their important step to their new church location. In this venture, his pastor, Alan Rodda, writes: "Cliff had the overall leadership for our \$4,000,000 relocation project. For a church of our size to accomplish such a task is truly a venture of faith. Without his leadership, it would have been impossible. The ability of Cliff to pull disparate elements of a large cosmopolitan congregation together into a unified thrust is truly a mark of achievement."

Cliff has also given unwavering devotion and work to promote NNC. He has served as Regent, Alumni President, Oregon-Pacific Alumni Director, President of NNC Scholarship Golf Association and other capacities too numerous to mention.

ber, 1980. Presently, he is serving on the faculty of Seattle Pacific University.

DON SCHERER '76 is presently teaching Physical Science and Math at Cana High School, Mammoth, Lesotho. In July, Don married Bliana Petkova of Sofia, Bulgaria. She is a Civil Engineer and a graduate of the Faculty of Engineering, University of Kabul, Kabul, Afghanistan.

HOMER SMUCK '73 is currently pastor of the Friends Church in Nampa. Following graduation, Homer received a degree in Religion from Friends Bible College.

JOHN W. BAKER '76 received a Master of Divinity

degree from the American Baptist Seminary, Berkeley, CA on June 7, 1980.

CAROLYN LEE SHROLL '70 spends most of her time coaching retarded children in Special Olympic events. Carolyn lives in Payette, Idaho and is a Therapeutic Recreationist.

GLORIA SIFFERATH '70 is currently working at the Mayo Clinic in a Clinical Microbiology lab. Her assignment is identifying less known, but active bacteria.

TRISH (LANMAN) FROSLAND '75 is an Administrative Coordinator for Electronic Realty Association in Eugene, OR. She and her husband, Chuck, are

active members of the Eugene Nazarene Church.

KERRY L. PHILLIPS '75 has opened and will manage a branch office for Advance Mortgage Corporation in Littleton, CO. He has been in the mortgage banking business for two and one half years.

HAROLD ANDERSON '77 graduated from Pacific School of Religion in June, 1980, with an M.A. He now plans to attend Nazarene Theological Seminary for the next two years.

TRANSITION

DEATHS

NORMAN LOWRY ('41) died in Portland on September 10, 1980. He was an ordained minister in the Church of the Nazarene and was most recently a real estate salesman in Boise.

MARRIAGES

DAN BOWMAN '78 and Jylene Vos, current NNC student, were married August 30, 1980, in Marshalltown, Iowa. Dan is the son of Mr. and Mrs. Ray Bowman of Nampa, and Jylene is the daughter of Mr. and Mrs. Gene Vos of Marshalltown. Dan is a member of the KIVI-TV Channel 6 News Staff in Nampa.

five

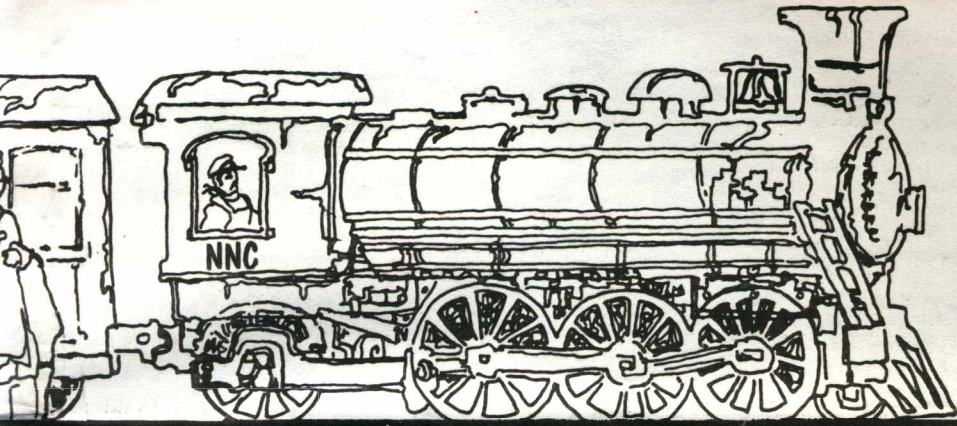
Homecoming Boutique to open in new location

The popular "country boutique" sponsored each Homecoming by the NNC Women's auxiliary will return this year in a new location. The display of home-made arts and crafts, the sale of which goes toward special NNC projects each year, will be in the main floor hallways of Wiley Learning Center

rather than the Student Center Lounge, which was redecorated and furnished this summer.

Individuals, churches, or ladies' fellowship groups who have craft work to donate for this year's boutique may send them to: NNC Women's Auxiliary, Nampa, Idaho 83651.

COMING '80 NOVEMBER 26-30



"WE'RE ON THE RIGHT TRACK"

er 28

y Administration Bldg.

10:00 AM-11:10 AM
PRESIDENT'S CHAPEL
Speaker - Cliff Cowley '52
"Alumnus of the Year"



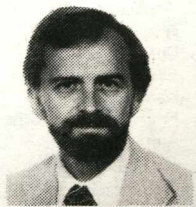
11:30-1:00
President's Reception
Honoring Former President L.T. Corlett
Student Center Lounge

ents meet with Bruce Webb,
y Learning Center

Saturday - November 29

8:00 AM - Crusader Athletic Assoc. (CAA) Breakfast, SAGA \$1.75

WORKSHOP FOR: ALUMNI EDUCATORS, PARENTS & FRIENDS



SPEAKER
Dr. Wayne Light
Class of '68
School Psychologist,
Santa Rosa, CA

"How to stay away from the Psychologist"
"Learning Disabilities"

Dr. Light comes to us well recommended as an outstanding Lecturer, Author and Workshop Director. Voted California School PSYCHOLOGIST OF THE YEAR for 1980.

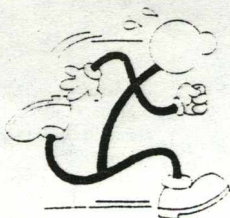
9:00 AM-12:00 - WILEY LEARNING CENTER

Continuing Education Credit given. Attend the workshop and deduct your trip to Homecoming!

PLUS: Honor Luncheon for Dr. Culver

Workshop Fee \$10.00

Workshop Plus Luncheon \$13.50



1:00 JOGATHON - A fund raiser for NNC Clubs & Organizations

2:25 JOG-FOR-FUN - An entry fee of \$7.00 entitles you to a souvenir Tee Shirt, scores of prizes, healthful exercise and just a good time!

2:30 Drama "Lute Song" - Last performance, Science Hall, \$1.25

6:00 Women's Basketball - NNC vs College Southern Idaho

8:00 Basketball NNC vs Lewis & Clark (Lewiston)

POST GAME - CAA RECEPTION - Montgomery Gym

Sunday - November 30

10:00 a.m. - Attend the Church of your Choice

8:00 p.m. - Handel's Messiah - College Church

MOTEL RESERVATIONS

NAMPA	BOISE
Desert Inn - 467-1161	Red Lion - 800-547-8010
Shilo Inn - 466-8993	Travelodge 800-225-3050
CALDWELL	Holiday - 344-8365
Frontier - 459-1536	Sheraton - 344-7691
Sundowner - 459-1585	Super 8 - 344-8871
Holiday - 459-4678	

BABY SITTING SERVICE:

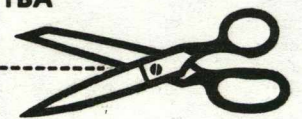
During

Reunion Breakfast Alumni Banquet
All Games and Class Reunions
at College Church

Music Concert - at First Church

Fee - TBA

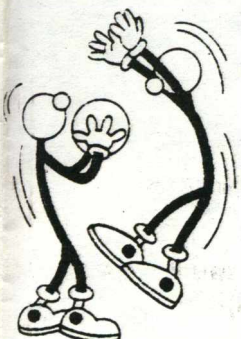
-----CUT AND RETURN TO-----



NNC ALUMNI OFFICE

Please make reservation:

Thursday Thanksgiving Dinner - 4:00	_____ @ 4.75 \$
Friday Class Breakfast - 8:15	_____ @ \$ 2.75 \$
Friday Alumni Banquet	_____ @ \$ 4.75 \$
Friday Game All seats Including Bleachers Reserved	_____ @ \$ 3.00 \$
Students	_____ @ \$ 1.50 \$
Saturday Workshop	_____ @ \$10.00 \$
Luncheon	_____ @ \$ 3.50 \$
Saturday Game All Seats Including Bleachers Reserved	_____ @ \$ 3.00 \$
Students	_____ @ \$ 1.50 \$
DRAMA:	
Wednesday - 9:00	_____ @ \$ 1.25 \$
Thursday - 1:00	_____ @ \$ 1.25 \$
Saturday - 2:30	_____ @ \$ 1.25 \$



Donors to the Alumni Fund Appeal

- Elva Abbott
Penny Abnet
Ruben and Jean Ackerman
Leona Aggola
Clair and Viola Ahlborn
David Ahlborn
Cameron and Mindy Airhart
Carolyn J. Airhart
Lyle and Elayne Akers
Don M. Albers
Ann J. Allen
Mike and Judy Allen
Ethel Allison
Daniel and Melody Anderson
James and Janita Anderson
Myrna Anderson
Pat Anderson
Rowland Anderson
Amos and Vada Andrew
Leland Angier
Harris B. Anthony
Sharon Applebee
N. N. and Myrtle Arechuk
Mr. and Mrs. Ray Arnold
- Donna Mae Bacon
William Bahan
Edna Bailey
Leo and Joy Bailey
William C. and Margaret Baptiste
Eugene and Corine Barbour
David and Janet Barclay
Pam Barlet
Toni and Shari Barnum
Carol Barrera
William E. Barrett
Don and Ila Mae Bartlow
Murray and Dalene Bartlow
Percy J. Bartram
Janet R. Bausman
Mr. and Mrs. George H. Beail
Ethan Beals
Everett Stanley Beals
Loring and Jen Beals
Prescott Beals
Paul and Esther Beaver
Alfred and Ahnita Becker
Ron and Neva Beech
Robert and Ruth Beeson
Mr. and Mrs. Ron F. Beeson
Bob Beets
Jonathan and Fern Belisle
Gordon and Shirley Belzer
Nancy J. Belzer
Verne A. Belzer
Larry and Sharon Benjamin
William and Sarah Benjamin
Richard and Patricia Benner
Allen and Adeline Bennett
Jean Bennett
Fernando Bensusaski
Merril and Myrtlebelle Bennett
John and Marilyn Berggren
Larry Beshere
Kevin Best
Curt Beukelman
Delmar Beukelman
Lonnie and Aletha Bevins
Lloyd and Alberta Birks
Velma Blacklock
Raymond Blakesla
Leota Bocak
Mark and Doris Bodenstab
Lenore Boehlke
R. T. and Pat Bolerjack
Ray and Helen Bolerjack
Clarence and Edna Bolton
Janet Bonstrom
Curtis R. Bottemiller
Larry and Kathleen Bottemiller
A. Wendell Bowes
Clarence and Alzora Bowman
Arthur and Ruth Boyd
Leatha S. Boyd
Viera Boyd
Blanche Jane Boyle
Beulah Bozarth
Lauren and Lillian Bozarth
Julia Braddock
Betty Bradley
Joy Brady
Isabel D. Bramson
Vilas Brandt
John Brasch
Roy J. Breshears
Rick and Donna Bressler
W. Wayne and Cheryl Brown
Don Brumfield
Darl Bruner
James R. Bruner
Leon and Telva Bruner
Bonnie M. Brydon
Carlton and Elsa Lou Bryson
Sarah Buchholz
Carolyn Buckley
Jay B. Budd
Donald Buerer
Pat Buffett
Geraldine Buhla
Robert and Bonnie Bunger
Don Bundy
James and Cindy Bunn
Jack D. Burke
Emery R. Burke
Esther Burkheimer
Harriett Burkheimer
Jessie Bush
Deanna M. Byer
- Ruth H. Cahn
B. M. Calhoon
Karen Calvin
Forrest and Orpha Cammack
Floyd and Kathleen Campbell
Terry and Carmen Cantrell
Alma Carlson
E. Margaret Carlson
Reed Carlson
Mr. and Mrs. John E. Carpenter
Lee and Gerry Carter
Kathy Carty
Donna Carver
Lorraine Caver
Bob Caudill
Morris Chalfant
A. Kirk Chadler
- John E. Chandler
Louise Chapman
Geraldine Chappell
Charles and Colleen Chase
Marjory M. Childs
Fredrick and Jeanne Chirico
Clara Christensen
Helen Christensen
Peggy Christensen
Sandra Christenson
Donald and Faye Christianson
David A. Christofferson
Billy W. Clark
Rachel Baker Clifton
Tom and Jean Clough
Ben and Carol Clouser
Verd and Doris Cockran
E. David Coey
Carolyn Collins
Arthur and Verna Combs
Billie Conant
Arthur B. Cook
Ralph and Dorothy Cook
JoAn Cook
Ray Cooke
Ethel Grace Cooper
Della M. Corbett
Jim and Vernetta Corbett
Mel and Caryol Coryell
Edith Cotner
Ken and Jean Cotten
Joan Cowley
Ellis G. Cox
Faith Cozad
Gladys A. Crandell
Charles and Hazel Croft
William C. Croft
Stanley Crow
Monty Crum
Elnora Cummings
Beatrice Cunningham
- Tom Dale
Viola Dand
Ralph and Carleen Davidson
Charlotte Davis
Jim "Trainer" Davis
Kelly R. Davis
Larry and Valeda Davis
Jane Day
Nila R. Dean
Hal DeBoard
Randall and Shigeo Deese
Dale and Nancy DeHamer
Wallace DePartee
John H. Dick
D. P. Dixon
David P. Dixon
Kathryn Dixon
Evert A. Dobbs
Howard E. Dobbs
Douglas and Sharon Doty
Frederick A. Drown
Margaret M. Duval
- Al and Lucille Eason
Leonard and Verla Eastly
David and Kathi Eckert
Hazel M. Eddy
Daniel and Lavone Edgar
Walter E. and Charlotte Edgar
F. W. and Doris Edgbert
Wilda L. Edgerton
Glenius Edinger
Arlus Edwards
Kathy Edwards
S. L. and Norma Edwards
Martha C. Eld
Gertrude I. Elliott
Dennis and Cammi Ellis
Erwin and Marie Ellis
Karalee M. Ellis
Paul T. Ellis
Stephen and Lucille Ellis
Verna Ellsworth
Sharon L. Elton
Dorothy B. Elwood
J. Calvin Emerson
Mary Ellen Emmans
Marvin E. Emrich
Robert and Doris Emrick
Lindsay and JoAnne Enderby
Marvin and Geraldine Eppes
Don and Ellen Erickson
Joyce J. Erickson
Marjorie Erickson
Liberty Ernest
Maxine Ernest
Paul and Norma Ernest
Lyle Estabrook
Richard and Joyce Etulain
Ralph Ewer
- Alta Faris
Carlene Farley
Douglas Farmer
David and Darlene Fauser
Carol L. Fillmore
Sharon Fiman
A. J. and Ella Finkbeiner
Arnie and Lydia Finkbeiner
John Finkbeiner
Myron Finkbeiner
Janet D. Flagel
Gladys Flannery
Joyce Fleischmann
Leonard Fletcher
Paul E. Flowers
Donald R. Fogelsonger
Bruce K. Forrest
Marcia Forrester
Barbara Forsyth
Ross and Linda Fox
Dave and Carolita Fraley
Warren Franklin
Weldon Franklin
Glenn and Doryce Fraser
Charles "Sam" and Cheryl Frazier
J. B. Frazier, Jr.
Gordon and Betty Frey
Raymond and Hazel Friberg
Leslie C. Fritzman
Bruce and Nancy Froemke
V. Louise Fuhrer
Pat Fujii
Arlis Fulgham
- William and Louise Fuller
Kathleen Gagnon
Shirley A. Gale
Chester and Mary Alyce Galloway
Stanley W. Galloway
Nancy Gammill
Donna Gardner
Doris G. Gardner
Howard and Dorothy Gardner
Juanita Gardner
David and Marilyn Gebhardt
Lloyd F. Gebhart
Charles Geselle
Carolyn Gilbert
Rachel S. Gilbert
Carmen Gilmore
Virginia Gilmore
Betty Goldberg
Donald E. Golladay
Joe and Esther Goss
Florence Goss
Scott Grant
Earl and Bernice Gray
Eddie Gray
Julia Gray
Daniel K. Gresham
Paul A. Griffith
Alice Gronewald
Bob and Karen Grossman
Lee W. Gundersen
- Roy Hablitzel
Rich and Junella Hagood
Fred and Margaret Haidle
Mildred Haley
Roy and Irma Haley
Roland and Roberta Halle
Charles and Eunice Hallin
J. C. Hammagren
Mr. and Mrs. Harold Hampton
Roger Hank
A. G. Hanners
Leonard Hannon
Gene and Nettie Hansen
Robert S. Hansen, Jr.
Russ and Janelle Hansen
Lois Judith Hanson
Karla J. Hardesty
Ken and Marilyn Harmaning
Jane Harper
A. F. and Laura Harper
Donald S. Harper
Ed and Bertha Harper
Ralph A. Harper
Mr. and Mrs. Alvin E. Harris
Carol B. Harris
Kathleen Harris
Lewis and Ella F. Harris
Ruby Harris
Ray Harrison
Glen and Ruth Hartley
Paul Hartwig
Carlton F. Harvey
Devrea Harvey
Richard and Elise Havens
Beverly R. Hawkins
Myrtle I. Hayes
Rod and Nancy Hearne
Dorothy Heilig
Garland Hemp
Robert D. Hempel
Ralph A. Henderson
Marjory Hendrickson
E. G. and Emma Jeanne Herman
Dennis and Lanet Herring
Lois Herringshaw
Ralph and Zylphia Hertenstein
Adele Hessling
Nancy L. Heward
LeRoy and Nella Heyd
Marilyn M. Hicks
Joe Mack Hight
Kent and Jan Hill
Janice Hilliard
Marilyn Hillier
Millee Hinds
Myla Hodgins
Geneva E. Hoffman
Willard and Zelma Hoffman
John and Victoria Hokanson
Erma A. Hokins
Sandra L. Hollinger
Connie Howard
Esther A. Howard
Quentin Howard
Lloyd Hubbard
Harold M. Hughes
Ralph and Helen Hull
Ralph E. Hull
Harold and Joyce Humphrey
Earl and Mabel Hunter
Merlin and Alice Hunter
Lois I. Husby
- Ben Ikerd
Charles and Pearl Iles
Orin E. Imbs
Victor V. McIntire
C. Orville Irish
Miriam E. Irish
Ida M. Irwin
Effie Isgrigg
Mr. and Mrs. A. R. Iverson
- Bob L. and Nelda Jackson
Laura Jackson
M. Pauline Jackson
Marilyn I. Jackson
Melvin Jackson
Patricia F. Jackson
Leroy and Janis James
John F. Janzen
Mr. and Mrs. Arthur Jenison
Doris Jewett
Brenda Joffer
Barbara Johanningmeier
Cari Johnson
Edwin and Carolyn Johnson
Floyd and Beth Johnson
Janet C. Johnson
Mabel Johnson
Marie Johnson
Wayne E. Johnson
Norma S. Johnston
Al and Kitty Jones
Pauline J. Jones
- Ken and Marilyn Keefe
Joe and Dera Keen
Lori Keen
Lowell and Mary Keene
Frank Kell
John R. Kell
Mary Louise Keller
Donald and Barbara Kelley
Tom Kelly
Kathy Kennedy
David Kephart
Roy Kettlehut
Russell W. Kiestler
George and Anita Kilbury
Dan Killion
Dorothy H. Kimball
William I. and Dorothy King
Clarence J. Kinzler
Ruth E. Kirk
Mr. and Mrs. Leo Kirley
Marvin and Mildred Kisse
Richard J. Kisse
Rick L. Knight
Roy Knight
Margaret Knowlton
Lee R. Koller
Margaret Koolhof
Elsie Krause
Randy and Jean Krauss
Mr. and Mrs. Jim Kribs
Joan Kubick
- Jerry and Mabel LaCelle
Leslie and Kathryn Laeger
Cindy D. Lander
Don and Leah Anne Lane
Walter and Faye Lanman
Margaret Ann Larson
Ivan and Virginia Lathrop
Elma R. Lawhead
Merton Lawson
Robert and Marjorie Lean
David Leavell
Elvin and Bea Leavell
Dorothy L. LeBaugh
Arnold W. Lee
LaMont "Bob" Lee
LaMont and Marita Lee
LaVonne Lee
Theresa A. Lee
Clarence Lefler
George and Virginia Leih
Margaret E. Leinweber
Mike and Penny Lemont
Patsy Lenken
Glenn and Sue Leppert
John L. Lewis
Stanley and June Lewis
H. Wayne Light
Lucie Lindberg
E. Annette Lindbloom
Carl and Ruth Lindbloom
Rudy Lindbloom
Richard and Nada Lindeman
Evelyn Lindsley
V. Louise Lindsey
C. L. Livengood
Gary and Sharon Locke
Michael E. Lodahl
Loren and Lucy Loeber
Louie L. and Janell Loeber
Frank J. Loehner
Mary M. London
Ruth A. Long
Mildred June Lovorn
Clyde Lowry
Harland R. Lutz
Van Lybber
Brenda M. Lyons
- Naomi Machen
Edith P. Macleod
Harold MacMillan
Wesley and Brenda Maggard
David L. Mallery
Bruce Malpass
Sylvia Mambeck
J. Robert and Lois Mangum
Paul and Jerri Mangum
Mildred Mantoen
Rex and Carolyn Marble
Gerry and Marilyn Marsh
Everett and Uletta Martin
James and Claudetta Martin
Judith Martin
J. L. Martinson
Louise Massey
Cheryl Massie
G. T. and Betty Masters
Roland A. and Elva Matmueller
Duane and Sue Mattson
John C. and Leona Maxey
Everyl Mechkes
W. J. and Alice Meek
Elna Merritt
Mr. and Mrs. Duane Meske
Nona Metcalf
Robert and Esther Michaelis
Betty Miedema
Donna L. Miller
Gordon and Naomi Miller
Lewis Miller
Michael Arthur Miller
Olive M. Miller
Vivian B. Miller
Wannetta L. Miller
Deward and Olivia Millsap
Mildred F. Millsap
Diane V. Minturn
Gary and Judi Mittelstaedt
Stanley G. Mittelstaedt
Mary Moench
Gust and Melva Moline
Lois M. Moland
Gary L. Mondell
Winnifred Louise Monk
James D. Monroe
Mr. and Mrs. Wayne Monteith
Mable Montenegro
Esther A. Montgomery
Marilyn Moon
Betty Moore
Gayle Moore
Bruce Morehouse
Ed and Esther Morgan
Lois R. Morgan
- Rex G. Morris
Dean and Marilyn Morrow
Mr. and Mrs. Arthur S. Moses
Marshall M. Mosley
Maxine Moss
Earl and Gladys Mosteller
Lynn Mottram
Roy Mottram
Howard and Marie Muir
Chester and Vivian Mulder
Mary E. Mull
L. W. and Margaret Murray
Richard and Connie Murray
Ron and Jan Music
- Don C. McBride
Donn McBride
Penny McCathron
Wanda McClain
J. E. McConnell
Vicky McCoy
Mary McCune
Helen McDougall
Edward C. McDowell
Alan and Anita McEntyre
Cynthia McGarrah
Duane S. McKay
Maude Poole McKay
Neil and Marilyn McKay
Cathy McKnight
Linda McMahan
Austin and Pauline McNaught
Ernest and Jan McNaught
- Lydia Neher
Elizabeth R. Nelson
Jordan and Janelle Nelson
Gale H. Newell
Gary L. and Sharon L. Nelson
George and Pauline Nelson
Gerald O. and Dianna Nelson
Phil and Carole Nelson
Lola M. Nording
Lyman and Lois Neubauer
Merton E. Nevin
Carol S. Newgard
Mr. and Mrs. Ivor Newsham
Glen and Hilda Nolte
Rod and Fayne Nutting
Erma Nygaard
- Donald W. Ogburn
Enoch Ogstad
Ruth V. Olin
Galen and Marcia Olsen
George and Judy Olson
Marilyn Olson
Phillip W. Olson
Sylvia Olson
Helen Ong
Jeryl Opp
William G. Osterhout
Lela Otterbein
Kim Overcast
G. Frederick Owen
- Jack Pace
Ralph Palmen
Maurice Palmquist
Mel and June Palmquist
Dale and Beverly Parnell
Glenn and Sharon Parker
Fred and Neva Parker
Joan Parsons
Paul and Margaret Parsons
Phil Parsons
Ralph and Donna Parsons
Ralph and Elizabeth Parsons
Mr. and Mrs. Robert Pauley
Mona Paulson
Gottfred H. Pearson
Faith Pennington
Duane Peppley
Floyd and Mary Elizabeth Perkins
Donald and Mary Perry
Harvey Petersen
Cindy Peterson
Mary Peterson
Phil Peterson
Lois Pettit
Arthid Phelps
Jerry and Judy Phillips
Kerry and Linda Phillips
Gilbert and Edith Pinto
Ruth Polisi
R. D. Poplin
Dave and Carol Porterfield
Kenneth J. Potter
Marlow Pounds
Eloise C. Powell
Mr. and Mrs. J. Dave Powell
Douglas and Shirley Powers
Ross E. Price
- George Quenzer
- Helen Ragsdale
Chester E. Rawson
Phyllis Reece
Don Reed
Linda Reed
Miriam Reeves
Gordon E. Renschler
Earl and Lois Rice
Ronald and Esther Rickard
Gladys M. Rider
Dr. and Mrs. John E. Riley
Morris Rimbe
Kenneth W. Rinard
David and Wanda Ristrom
Elma Rives
Ember Roberts
Grace Roberts
Jesse and Genevieve Robertson
Ken L. Rodenbush
Stanley and Cynthia Rodes
Lyle and Bernice Robinson
George Rogers
Loren and Joan Root
Wallace W. Roseboro
Leon and Clarice Ross
Tim Roth
James and Carol Rotz
Loretta J. Round
David and Phyllis Rudeen
Don L. Runyon
John and Hazel Rupert
- Crete Marie Sager
Michael and Cheryl Sakahara
Leland and Mildred Salisbury
Margaret Salisbury
Clint and Emily Sams
Dennis Sams
Nelda R. Sanders
James and Cari Sanderson
Jerry and Renee Sanford
Mr. and Mrs. Ralph Sanford
Virginia Saxton
Carol Sayre
Jane Scarth
Samuel M. Scammon
Alfred W. Schaar
Daryl A. Schendel
Esther Scherich
Mona Schermerhorn
H. Schmelzenbach
Hugh and Kay Schmelzenbach
Doug and Shirley Schmidt
Jeanine Schmidt
Kathryn Schmidt
Ken and Robin Schmidt
Mildred Schmidt
Robert and Kathryn Schmidt
Teddie Schmidt
Evelyn J. Schriber
Ura Schroeder
JoAnn Scoggin
Linda A. Scott
Nancy Seale
Lauren Seaman
Lynn Seehorn
Dale W. Shafer
Edna Sharman
Leora Sharp
Carl H. Shaver
Kenneth and Katherine Shen
Cecil and Leora Sheppard
Lillie Sherman
Ralph Shoemaker
Ray and Donna Shoemaker
Gloria Sifferath
Edrie A. Simmons
Louise Simmons
Linda R. Sitton
Rodney and Jennifer Skinner
Terry Stabaugh
Elda G. Sloan
Wallin and Elaine Slonaker
Wayne and Helen Slonaker
Audrey Smith
Carolyn Smith
Craig and Nancy Smith
Esther Smith
Genevieve G. Smith
Gordon and Darlene Smith
Harold Smith
Loyd and Verna Smith
Norma Dell Smith
Steven and Mary Jo Smith
Harvey and Ruth Snyder
Paul and Kathleen Sodowsky
Marilyn Sollars
Robert F. Soule
Russell and Betty Speer
Larry D. Spicer
James and Evelyn Springer
Nancy Spurlock
Nona L. Stagner
Paul and Sue Stallcop
Joan Standley
Gordon and Sue Stands
Rex and Dorothy Stanton
Kenneth and Anne Stark
Arvilla Stauffer
Wesley and Jane Steck
Charlene Stetson
Elwood and Kathryn Stetson
Karen L. Stiehl
Fred and Sandra Stiles
Alma Stilwell
Jerry Stone
Alberta Stonecypher
Jewel Strimple
Richard and Irene Stuart
Dorothy A. Sturtevant
Cindy Styer
L. E. Suiter
Gladys Sukraw
John and Mary Sullivan
Tom and Sandy Summers
Frances Sutherland
Paul and Anne Sutherland
Thomas and Carolyn Sutherland
Hilda E. Sutter
Leona Sutton
Paul L. Swalm
Donna D. Swanson
Orville H. Swanson
Helen G. Swartz
Paul and Nancy Swartz
Mary I. Sweatt
Joan M. Swim
Roy E. Swim
Gary and Lois Swope
- Beth Tame
Earlene Tapley
Raymond and Patricia Tate
Roger and Verla Taylor
Thomas and Linda Taylor
Williamina I. Taylor
Darrell and Dorothy Teare
Rod and Betty Tegethoff
Wayne and Sharlene Thiel
Mr. and Mrs. C. R. Thiessen
Dwight E. Thiessen
Peter and Nancy Mae Thiessen
Carol M. Thomas
Kenneth and Minnie Thomas
Doug Thompson
Edith Thompson
Rose E. Thompson
Susy Kay Thompson
Mr. and Mrs. L. S. Tindall
Leroy and Sharon Tipton
L. M. Toedter
Roberta Tomlin
Tim and Jeanne Tooman
June Trauernight
Earl Tromburg
Alvin Trueblood
Donald F. Tucker
Lynda Turner
- Wilma K. Turner
Aleck and Ethelyn Ulmet
Raphael Urbina
Max Urwin
Darlene Valon
Glenna Best Van Allen
Stan and MaryLou VanArsdel
Mona L. Van Brenk
Fern van den Heuvel
John and Debi Van Manen
Rose Van Meter
Gerald and Patricia Van Order
William and Sheryl Vernor
Melvin M. Wahl
Dean and Suzanne Walker
Melvin A. Walker
Willis and Alice Marie Walker
Betty D. Wall
Charles Wallace, Jr.
Lyndee R. Wallace
Eleanor Waller
Howard Walling
David and Mable Wardlaw
Steven Wardlaw
Ken and Jan Watson
Ben Weatherby, Jr.
Kathie Weaver
Lewis Daniel Weigelt
Robert and Lora Jane Welk
Mabel A. Wesche
Katherine West
Bruce Westlake
Eleanor Westmacott
David and Lloydene Westmark
Bill and Jami Wheeler
Larry and Rosemary Wheeler
Ray and Eileen Wheeler
Charles S. Whisman
Les and Marilyn Whitaker
Larry and Rebecca White
Wendell Widdowson
Cherrill Widmark
Wallace and Noreen Wiecezorek
Melvin and Ima Wikoff
Roger and JoAnn Wilcox
Georgia Wild
Kay M. Wilder
Jeanne Wilhelm
Charles and Lois Wilkes
Chuck and Mitzi Wilkes
L. Brian Williams
Ruth N. Williamson
Sam and Suzanne Williamson
Donald C. Willis
Harold J. Willis
Jim and JoAnn Willis
Archie and Bea Wilson, Jr.
Mr. and Mrs. Charles L. Wilson
George and Edythe Wilson
Jerry and Brenda Wilson
Lawrence C. Wilson
Mark and Teckla Wilson
Mary Wilson
Susie Wilson
Frances L. Wise
Bernice Witt
Grace Witter
Susan Wolf
Cora Wolfe
Ronald and Velma Wood
Ruth Lynn Wood
Stacia E. Wood
James and Jane Woolbright
Robert Worthen
Gertrude Worthington
Floyd S. Wright
Ronald and Nancy Wright
Tom W. Wright
Cora Wolfe
James and Mary Yarborough
Paul and Marolyn Yard
Merrilee Yates
Paul and Lois Yeend
Connie York
Eslie and Ardath Young
Wesley and Kristine Young
Margaret Zahra
Arthur K. Zellmer
Chuck Zickefoose
George Zickefoose
Edwin and Esther Zimbelman
Ron Zimbelman
Curtis and Carol Zimmerman
Laura Zink

Secretary's Scriblings . . .

A great big thank you to all the alumni who responded to last year's Fund Appeal. What a tremendous outpouring of generosity! Nearly nine times more of you gave this year than the previous year. I have listed your names elsewhere in this issue of the *Messenger*. If your name has been omitted by mistake, please notify the alumni office.

Let me add here, some alumni have been contributing to NNC through other avenues and your names are not on this particular

list. My appreciation is added to others who have already expressed their thanks. All of us working together will advance the cause of NNC.

The Alumni Directory is now at the publishers, and for all of you who are listed on the donor's roll, a copy will come to you in January of '81. In addition, we have ordered enough copies to allow many more alumni to receive theirs. For you who did not respond this past year, contributors to the '80-'81 Fund Appeal will also receive a copy.

Several alumni activities are planned this winter in conjunction with scheduled basketball games. Plan now to attend a get-

together if the team is playing in your area. Particular games of interest will be:

- Nov. 21-22 - NNC vs Point Loma at San Diego
- Dec. 20 - NNC vs University of Idaho at Moscow
- Feb. 21 - NNC vs. Seattle Pacific at Seattle

Plan to attend Homecoming. There will be something of interest for all of you.

Myron Finkbeiner
Alumni Executive Secretary

seven

the nnc messenger

Constitutional changes approved

Report of the Ballot on Constitutional Changes
8,835 ballots mailed — 1,197 responded

‡ ARTICLE III, Section 3 presently reads: All former students of the college are members of the Association, provided such students have completed one term of work at NNC.

CHANGE . . . provided such students have completed one year of work at NNC.
(this is not retroactive)

RESULT OF VOTE: YES . . . 1,131 NO . . . 65

‡ ARTICLE IV, Section 3 presently reads: In the event of a vacancy in a Director's position prior to the expiration of the three year term, the Nominating Committee shall meet when called by the Executive Secretary to nominate two or more persons for the vacant position. Ballots will be sent to alumni members on each district.

CHANGE: In the event of a vacancy in a Director's position prior to the expiration of the three year term, the Alumni Executive Committee will make two nominations to the Board of Directors for a final selection, followed by an appointment by the Executive Secretary.

RESULT OF VOTE YES . . . 1,142 NO . . . 52

‡ ARTICLE V, Section 5 presently reads . . . Directors-in-Charge shall select, subject to the approval of the President, working committee members from the alumni membership at large as he or she deems necessary to carry out the working committee activities.

CHANGE: The Executive Secretary and the President shall appoint members to various committees within the membership of the Board of Directors and/or their spouses.

RESULT OF VOTE: YES . . . 1,097 NO . . . 97

‡ ARTICLE VIII, Section 2 presently reads: In addition to the Alumnus of the Year award, each year the Board of Directors may select and honor an alumnus or other individual who has given outstanding financial support or service to the Alumni Association or the college or to a person who has achieved distinction in his or her chosen profession and thus brought honor or distinction to the college.

CHANGE: Each year the Board of Directors may select and honor, (1) an alumnus who has achieved distinction in his or her chosen profession and thus, brought honor and distinction to the college, or (2) an alumnus or other individual who has given outstanding financial support or service to the Alumni Association or the college. These two awards shall be named, "Professional Achievement" and "Distinguished Service" awards, respectively.

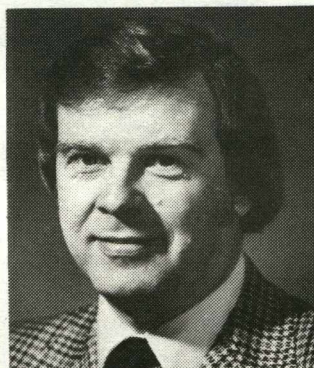
RESULT OF VOTE: YES . . . 1,173 NO . . . 20

ADD: Section 3 to ARTICLE VIII: A District award to be named the "Citation of Merit" shall be given yearly at each church District Assembly. Recipients of this award shall be decided upon by consultation between the specific District Director and the Executive Secretary. The recipient will be honored as a result of commendable service at the district church level.

RESULT OF VOTE: YES . . . 1,093 NO . . . 98

AlumNews

Continued



Dale Fleming '60

DALE M. FLEMING '60 has accepted an appointment as manager of the Instrument Calibrations and Evaluation Section of the Occupational and Environmental Protection Department at Battelle's Pacific Northwest Laboratories.

His 16-person staff maintains a portable radiation instrumentation pool for the entire Hanford Site. Fleming has done instrumentation research at Hanford since his graduation from NNC in 1960. His radiation instrumentation work began in 1972, when he joined the O & EP Department. Fleming has a master's in nuclear engineering from the University of Washington through the Joint Center for Graduate Study in Richland.

1980-81 Alumni Awards Nominating Ballot

Due to the increase in postal rates and printing costs, your Board of Directors has instructed the Alumni Office to conduct the year's nominations through the MESSENGER. We encourage you to nominate individuals you feel deserve special recognition by the Alumni Association and NNC.

ALUMNUS OF THE YEAR

— Recipient must be a graduate and outstanding in his/her profession —

Former Recipients

Gordon Olsen	David Sutherland	Rodney & Patsy Huling
Lyle Robinson	Prescott Beals	Philip E. Bramson
Thelma B. Culver	Jerald D. Johnson	Douglas Powers
Albert F. Harper	Double E. Hill	Leon Doane
Howard H. Hamlin	Norman E. Oke	Richard Etulain
The NNC Missionary	Helen G. Wilson	Ann Kiemel
George Coulter	Thomas E. Mangum	Ken Hills
Homer Powell	Earl Mosteller	Guy Nees
Stanley Mittelstaedt	Ron Weatherford	Chester O. Galloway

I nominate _____

Address (if known) _____

Names of others who can attest

Name _____ Address _____

Name _____ Address _____

Name _____ Address _____

PROFESSIONAL ACHIEVEMENT AWARD

Nominees should have record of achievements in their profession, thus bringing recognition to NNC. Must be an alumnus or alumna of NNC.

I nominate _____

Address (if known) _____

DISTINGUISHED SERVICE AWARD

Nominees should have a record of outstanding service to NNC. They may be alumni, members of the NNC staff, or friends of the college.

I nominate _____

Address (if known) _____

RETURN FORM TO ALUMNI OFFICE. Use separate sheet for pertinent information.

Here's what an NNC investment can do for you:

- Provide security for your retirement.
- Yield an income with sizeable tax benefits.
- Assure you of a worry-free lifetime payment guarantee.
- Pay attractive interest rates.

PLUS

Give you the satisfaction of supporting Christian Education. You can help yourself and at the same time assist young people prepare for Christian service.

For more information mail the coupon below

Northwest Nazarene College
Office of Financial Consultant
Nampa, ID 83651

Please send me, without obligation, literature describing your investment offerings.

Name _____

Address _____

City _____ State _____ Zip _____

Birthdate _____

Birthdate of spouse _____

VOL. LXVII

No. 5

the
messenger

October, 1980

Official organ of Northwest Nazarene College. Dr. Kenneth Pearsall, President; Terry Smith, Editor. Published six times a year: January, March, May, July, October, and November by Northwest Nazarene College at Nampa, Idaho 83651. Second class postage paid at Nampa, Idaho. No subscription price. No advertising (USPS 397-320).

MOVING? INCORRECT ADDRESS?

If you have a change or correction to make in your address as printed, please cut out the mailing label and send it with corrections to the Mailing Office, NNC.